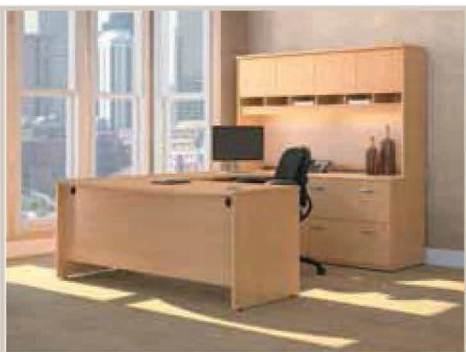




BUSH Furniture Series C



Your Office Will Never Be The Same!

HQ 24 West 39th Street New York City, NY 10018 Tel: 888.442.8242

Serving the Nation: Atlanta | Boston | Chicago | Dallas | Denver | Houston | Los Angeles | Miami | Philadelphia | San Diego | Tampa | Virginia | Washington DC

BBF fits your style, your budget, your business.

BBF fits your furniture needs with:



- Product lines for varying space requirements and work styles
- Styles and aesthetic choices for any budget
- Products tested to withstand 40-hour+ work weeks
- Products that perform anywhere you work
- Office desks, credenzas, hutches, and Filing drawers to accommodate any task.

BBF fits needs for value-added service:



- Nationwide delivery and installation to any zip code*
- Two-day order fulfillment, through our East and West coast distribution centers
- Accommodation of small orders and quick turnarounds
- Environmentally-conscious operating and manufacturing processes
- RTA Office Furniture delivers right to your door for a perfect DIY office furniture solution
- Full Assembly also available!

*Continental U.S.

“



Our small accounting firm needs budget office furniture. Is it too much to ask for professional space planning & installation for three offices?"

-Stuart, Traditional Small Business



"I need cool office furniture for our four person graphic design firm right away. Unfortunately everything I've seen that matches our aesthetic is way out of our price range"

- Angela, Non-Traditional Small Business



"As Facilities Manager I set up 8-10 telecommuter remote office locations monthly for around \$ 1500 each."

-Whitney, Remote Office Environment



I'm launching my own business and I need high-quality home office modular furniture for a professional, home-based office."

- Brandon, Office@Home Environment

”



cubicles.com

888-442-8242

BUSH Series C



Timeless styling and lasting appeal.

When you need furniture for a private office, you can't go wrong with BUSH Series C. It's everything you want and need, and nothing you don't.



BUSH BUSINESS FURNITURE

- Broadly appealing
- Unostentatious
- Sturdy and durable
- Freestanding and modular
— easily added to
- Clean lines
- Complete

Mahogany Finish
72" W Desk Shell, 72" W Credenza Shell, 72" W Overhead (2-Door),
(2) Mobile Pedestal (F/F), (2) 18" W 5-Shelf Bookcase



cubicles.com

888-442-8242

BUSH Series C



C

bbf

BUSH BUSINESS FURNITURE

BUSH Series C Desk Fits your function



What kind of office
do you need?

How will you use your furniture?

Series C features a range of options from
a single desk to multiple workstations.
Choose a pre-configured typical or have
a custom space plan completed free.



Warm Oak Finish
72" W Desk Shell, 72" W Credenza Shell, 72" W Overhead (2-Door),
(2) Mobile Pedestal (F/F), 24" W Piler/Filer, 24" W Overhead
Optional Accessories Shown: Pencil Drawer



Auburn Maple Finish
60" W x 43" D LH L-Bow Desk, 48" W Return Bridge,
60" W Overhead (4 Door), 36" W 2-Drawer Lateral File
Optional Accessories Shown: Monitor Arm w/Post



Hansen Cherry Finish
72" W Desk Shell, 48" W Return Bridge,
Reception L-Shelf, Mobile Pedestal (B/B/F)
Optional Accessories Shown: Pencil Drawer



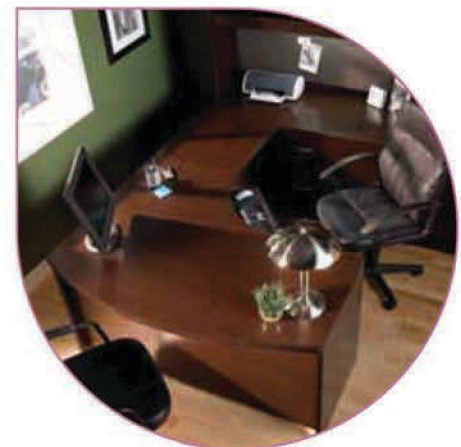


BUSH Series C Features

- Durable thermally-fused laminate work surfaces provide years of service
- Grommets and wire management for technology compatibility
- Heavy-duty full-extension suspensions on file drawers
- Tack board and back panel included on overheads
- This ready-to-assemble product line is a smart option for those who require moderately priced furniture designed to withstand the rigors of a 40-hour+ work week
- Meets ANSI/BIFMA standards for safety and performance
- Commercial quality backed by 10-year manufacturer's warranty
- FREE space-planning assistance is available



Open storage and tack boards
organize active projects



Durable work surfaces

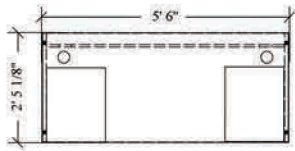


Attractive and professional
closed leg design

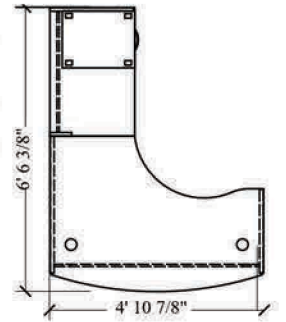
BUSH Series C Office Typicals



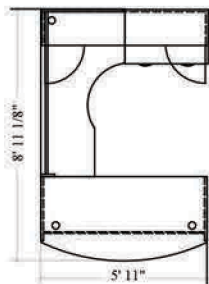
Qty.	Item
1	66"W Desk Shell
2	3/4 Pedestal (B/F)



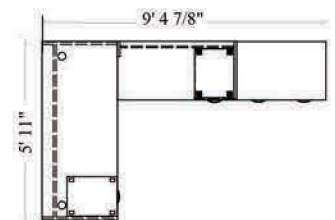
Qty.	Item
1	60"W x 43"D RH L-Bow Desk Shell
1	36"W Return Bridge
1	Mobile Pedestal (B/B/F)



Qty.	Item
1	72"W Bow Front Desk Shell
1	72"W RH Corner Module
1	36"W 2-Drawer Lateral File
1	72"W Overhead (4-Door)

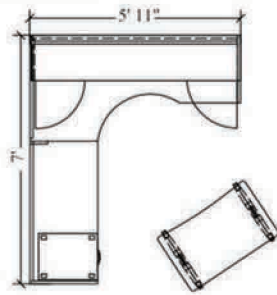


Qty.	Item
1	72"W Desk Shell
1	48"W Return Bridge
1	Mobile Pedestal (B/B/F)
1	Mobile Pedestal (F/F)
1	36"W 2-Drawer Lateral File

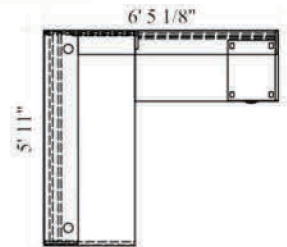




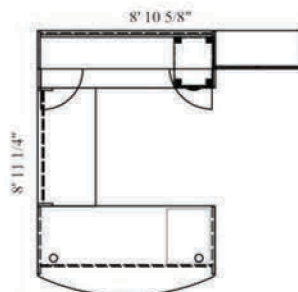
- | Qty. | Item |
|------|--------------------------------|
| 1 | 72"W LH Corner Module |
| 1 | 48"W Return Bridge |
| 1 | 72"W Overhead (2-Door) |
| 1 | Mobile Pedestal (B/B/F) |
| 1 | Adjustable Height Mobile Table |



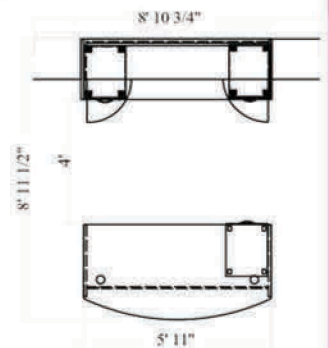
- | Qty. | Item |
|------|-------------------------|
| 1 | 72"W Credenza Shell |
| 1 | 48"W Return Bridge |
| 1 | Reception L-Shelf |
| 1 | Mobile Pedestal (B/B/F) |



- | Qty. | Item |
|------|---------------------------|
| 1 | 72"W Bow Front Desk Shell |
| 1 | 48"W Return Bridge |
| 1 | 72"W Credenza Shell |
| 1 | 72"W Overhead (2-Door) |
| 1 | 3/4 Pedestal (B/F) |
| 1 | Mobile Pedestal (F/F) |
| 1 | 36"W 5-Shelf Bookcase |
| 1 | Half-Height Door Kit |



- | Qty. | Item |
|------|---------------------------|
| 1 | 72"W Bow Front Desk Shell |
| 1 | 72"W Credenza Shell |
| 1 | 72"W Overhead (4-Door) |
| 1 | Mobile Pedestal (B/B/F) |
| 2 | Mobile Pedestal (F/F) |
| 2 | 18"W 5-Shelf Bookcase |



BUSH Series C

Work Surfaces and Extensions



72"W Bow Front Desk Shell
29 7/8"H x 71 1/8"W x 36 1/8"D



60"W x 43"D RH L-Bow Desk Shell
29 7/8"H x 58 7/8"W x 42 7/8"D



72"W Desk Shell
29 7/8"H x 71 1/8"W x 29 3/8"D



72"W RH Corner Module
29 7/8"H x 71 1/8"W x 35 1/2"D

60"W x 43"D LH L-Bow Desk Shell
29 7/8"H x 58 7/8"W x 42 7/8"D

66"W Desk Shell
29 7/8"H x 66"W x 29 3/8"D

72"W LH Corner Module
29 7/8"H x 71 1/8"W x 35 1/2"D



72"W Credenza Shell
29 7/8"H x 71 1/8"W x 23 3/8"D



48"W Return Bridge
29 7/8"H x 47 3/4"W x 23 3/8"D



Adjustable Height
Mobile Table
26 3/8" - 34 3/8"H x 35 3/8"W x 22"D

60"W Credenza Shell
29 7/8"H x 59 1/2"W x 23 3/8"D

36"W Return Bridge
29 7/8"H x 35 1/2"W x 23 3/8"D

BUSH Series C

Overhead Storage



72"W Overhead (4-Door)
43 3/8"H x 71 1/8"W x 15 3/8"D



72"W Overhead (2-Door)
43 3/8"H x 71 1/8"W x 15 3/8"D



30"W Overhead
43 3/8"H x 29 3/8"W x 15 3/8"D



24"W Overhead
43 3/8"H x 23 3/8"W x 15 3/8"D

60"W Overhead (4-Door)
43 3/8"H x 58 7/8"W x 15 3/8"D



Reception L-Shelf
14"H x 77"W x 71 1/8"D



BUSH Furniture Series C Filing/Storage



36\"W 2-Drawer Lateral File
29\"H x 35\"W x 23\"D



Mobile Pedestal (B/B/F)
27\"H x 15\"W x 20\"D



Mobile Pedestal (F/F)
27\"H x 15\"W x 20\"D



3/4 Pedestal (B/F)
20\"H x 15\"W x 20\"D



24\"W Piler/Filer
29\"H x 23\"W x 23\"D



30\"W Storage Cabinet
29\"H x 29\"W x 23\"D



36\"W 5-Shelf Bookcase
72\"H x 35\"W x 15\"D



18\"W 5-Shelf Bookcase
72\"H x 17\"W x 15\"D



Half-Height Door Kit
29\"H x 35\"W x 1\"D

BUSH Furniture Series C Conference Tables



42\"W Round Conference Table
29\"H x 41\"W x 41\"D



82\"W x 35\"D Racetrack Conference Table
29\"H x 81\"W x 34\"D

* Conference Tables are not available in Auburn Maple Finish.

BUSH Furniture Series C Finish Options



Natural Cherry/
Graphite Gray



Auburn Maple/
Graphite Gray



Hansen Cherry/
Graphite Gray



Light Oak



Warm Oak



Mahogany



Mocha Cherry

BUSH Furniture Series C Accessories



Articulating
Keyboard Tray
3 $\frac{3}{8}$ "H x 24 $\frac{1}{2}$ "W x 19 $\frac{1}{2}$ "D



Deluxe Articulating
Keyboard Tray
1 $\frac{1}{4}$ "H x 27"W x 11"D



Universal Keyboard Shelf
4"H x 30 $\frac{1}{2}$ "W x 16 $\frac{1}{2}$ "D



Pencil Drawer
2 $\frac{1}{2}$ "H x 26 $\frac{1}{2}$ "W x 15 $\frac{1}{2}$ "D



Multi-purpose Drawer
w/Drop Front
3 $\frac{3}{8}$ "H x 27 $\frac{1}{2}$ "W x 17 $\frac{3}{8}$ "D



Monitor Arm w/Post
20 $\frac{1}{2}$ "H x 12 $\frac{1}{2}$ "W x 14"D



Data/Power Hub
2 $\frac{1}{2}$ "H x 5 $\frac{1}{2}$ "W x 6 $\frac{1}{2}$ "D



Task Light
1 $\frac{1}{2}$ "H x 23 $\frac{1}{2}$ "W x 3 $\frac{1}{2}$ "D



CPU Holder
22 $\frac{1}{2}$ "H x 9 $\frac{1}{2}$ "W x 14 $\frac{1}{2}$ "D



Where are You? We Go There.

Bush Business Furniture is selected specifically for its ease in a smooth delivery right to your office door, packed with care and ready to assemble. (RTA Office Furniture)

- Small Orders
- Closed spaces, tight stairways
- Fast turnarounds
- Unusual hours

If DIY office furniture is not your thing, don't worry. We'll work with you to install a quality, professional office, anywhere. Within 12 days or less.*

*In the Continental U.S. Some locations may take longer



Standard Delivery/Self Install:

- RTA office furniture
- Product ships within 2 business days following order placement*
- Delivered within 3-5 business days in the lower 48 states (remote locations may take longer)
- Depending on order size, product is delivered to the threshold or room of choice
- Large or heavy orders that qualify for room of choice delivery will get a prescheduled appointment time

*Some restrictions apply

Premium Delivery/Fully Assembled:

Hassle-free delivery and installation

- Product ships within 2 business days following order receipt*
- Delivery within 12 business days in the contiguous United States (remote locations may take longer)
- Prescheduled appointment time for your convenience
- Furniture assembled and installed inside the room of choice to residential and business locations
- Service includes adjustment of desks, drawers and doors; as well as leveling, dusting and removal of all packaging materials – all in a single visit
- We assume the risk associated with furniture delivery and installation. From start to finish, we manage the order, handle the details and execute the follow-up. We go the last mile.

Customer Service/Sales Support

How can we help you?

Please call 888-442-8242 for assistance with questions regarding office furniture plans, product availability, parts replacement, warranty issues and general product information. Office hours are Monday-Friday, 9 am–6 pm ET excluding major holidays.



Warranty



- Quantum™
- Milano2
- Momentum
- Realize™
- Synchronize 2000
- Synchronize 1000
- Seating
 - Amp
 - Charge
 - Dash
 - Pace
 - Spur
- BBF Conference Tables



- Aspen Tables
- Enterprise
- Office-in-an-Hour™
- ProPanels™
- Sector
- Series A
- Series C
- Syndicate
- Venture



- Seating
 - Activate
 - Advance
 - Attain
 - Energize
 - Invite



Environmental Sustainability

At BBF, we are proud to be good stewards of the environment, taking care to be environmentally conscious from the beginning to the end of our manufacturing process.

Some of our environmental initiatives include:

- CARB: All BBF products are compliant with CARB (California Air Resource Board) standards for reduced formaldehyde emissions
- EPPD ownstream Program (Composite Panel Association): More than 50% of panels purchased from EPP sources; board is 100% pre- or post-consumer recycled
- Energy Reduction: Reducing electricity consumption and improving machinery efficiency
- Landfill Reduction: Diversion of plastic waste away from landfills and improved recycling of plastic, cardboard, tin and scrap metal
- Corporate Recycling: Recycling plastic, paper and aluminum cans in our corporate offices
- Special Sustainability Teams: Tasked with improving efficiency and reducing waste in our manufacturing processes
- Ongoing Certifications: Actively participating in industry-related programs, such as BIFMA e3 Level and ISO 14001 82



Product Testing

We fit your demands for safety and durability. Our commercial products undergo rigorous testing in our sophisticated in-house testing laboratory, to ensure that they meet or exceed professional ANSI/BIFMA standards for safety and performance.

We test:

- Resistance to scratches, stains and abrasions
- Weight load
- Leg strength
- Stability/dislodgement
- Cycle testing on casters, hinges and drawer suspensions



The result of this obsessive attention to quality is that our products are ergonomically correct and compliant with state and federal health and safety guidelines.

Start



Your Office Will Never Be The Same!

HQ 24 West 39th Street New York City, NY 10018 Tel: 888.442.8242

Serving the Nation: Atlanta | Boston | Chicago | Dallas | Denver | Houston | Los Angeles | Miami | Philadelphia | San Diego | Tampa | Virginia | Washington DC