

2D PROPOSED PLAN

O2™ Panel System/ Grade 2/ Thin Base /85" H FABRIC PANELS

[6] 10'6" x 6' x 85" H NON POWERED STATIONS W/

- [1] BOX/BOX/FILE PEDESTAL/EA
- [1] FILE/FILE PEDESTAL/EA
- [1] 60" W SHELF / EA
- [1] TASK LIGHT /EA
- [1] DUPLEX DESK MOUNTED
- [1] TACKBOARD
- [1] MODESTY PANEL

*M2,M3,M4,M6 - with Height Adjustable bases

[1] 3'6" x 6'6" DESK W

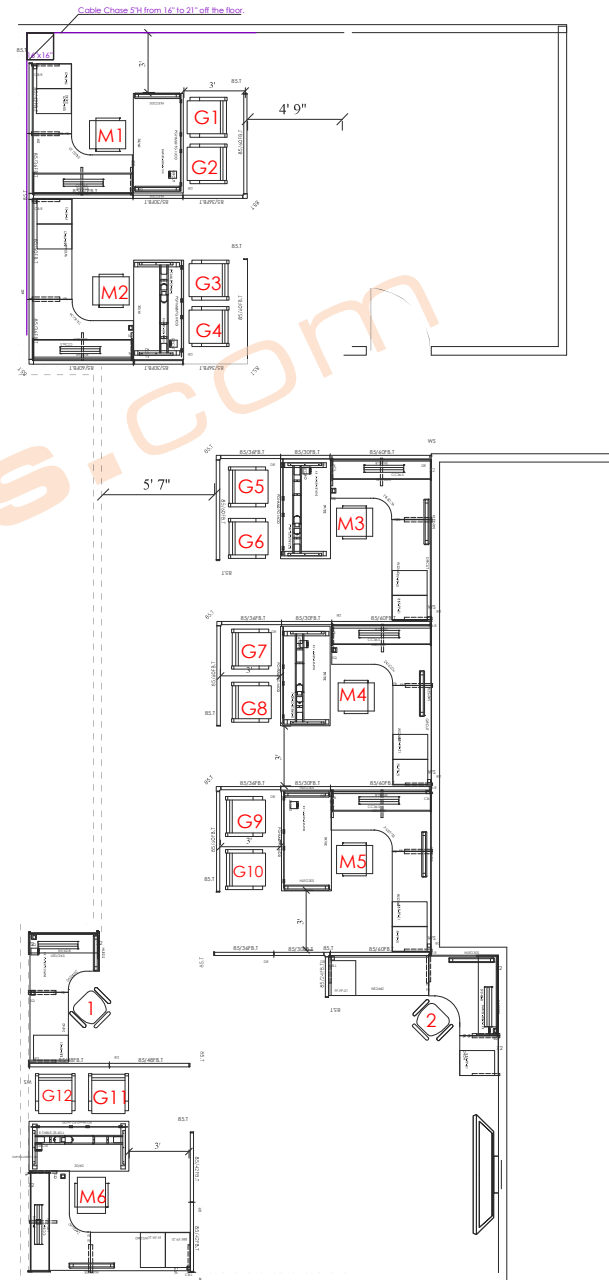
- [1] BOX/BOX/FILE PEDESTAL
- [1] 42" W SHELF

[1] 8'6" x 6' DESK W/

- [1] BOX/BOX/FILE PEDESTAL
- [1] 48" W SHELF

SEATING

- [7] TASK CHAIRS



GENERAL NOTE:
walls to be clear of any obstruction
prior to panel/shelf wall-mounting